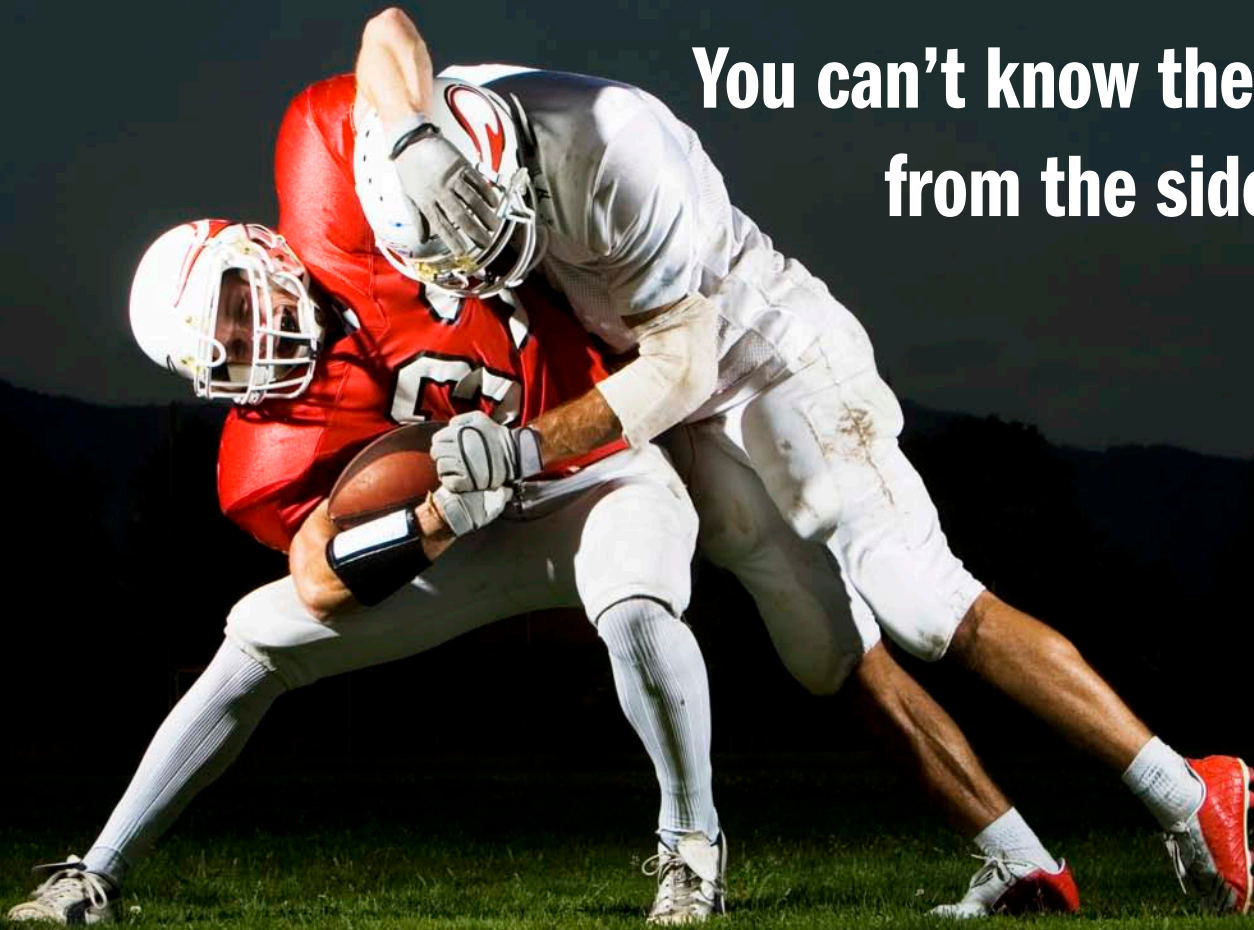


You can't know the game from the sidelines.



In order to succeed in today's market, you need a team with daily market presence and real-time data. You need a team that is still closing properties.

What is this team's gameplan? Candor. Honesty and pricing that's ahead of the curve. Teamwork, and fighting hard for each deal on a daily basis.

To date, Capital Pacific's 13 agents have closed 9 commercial properties in 2009, have another \$155M in escrow or under LOI, and have fielded 91 offers.

This is the team that will provide access to the invisible buyer, to those who are still transacting business today. The result? Greater certainty for your projects.



For your gameplan for today's market, contact:

Capital Pacific San Francisco
415.274.2700

Capital Pacific Portland
503.675.8380

CAPITAL
PACIFIC
www.capitalpacific.com 